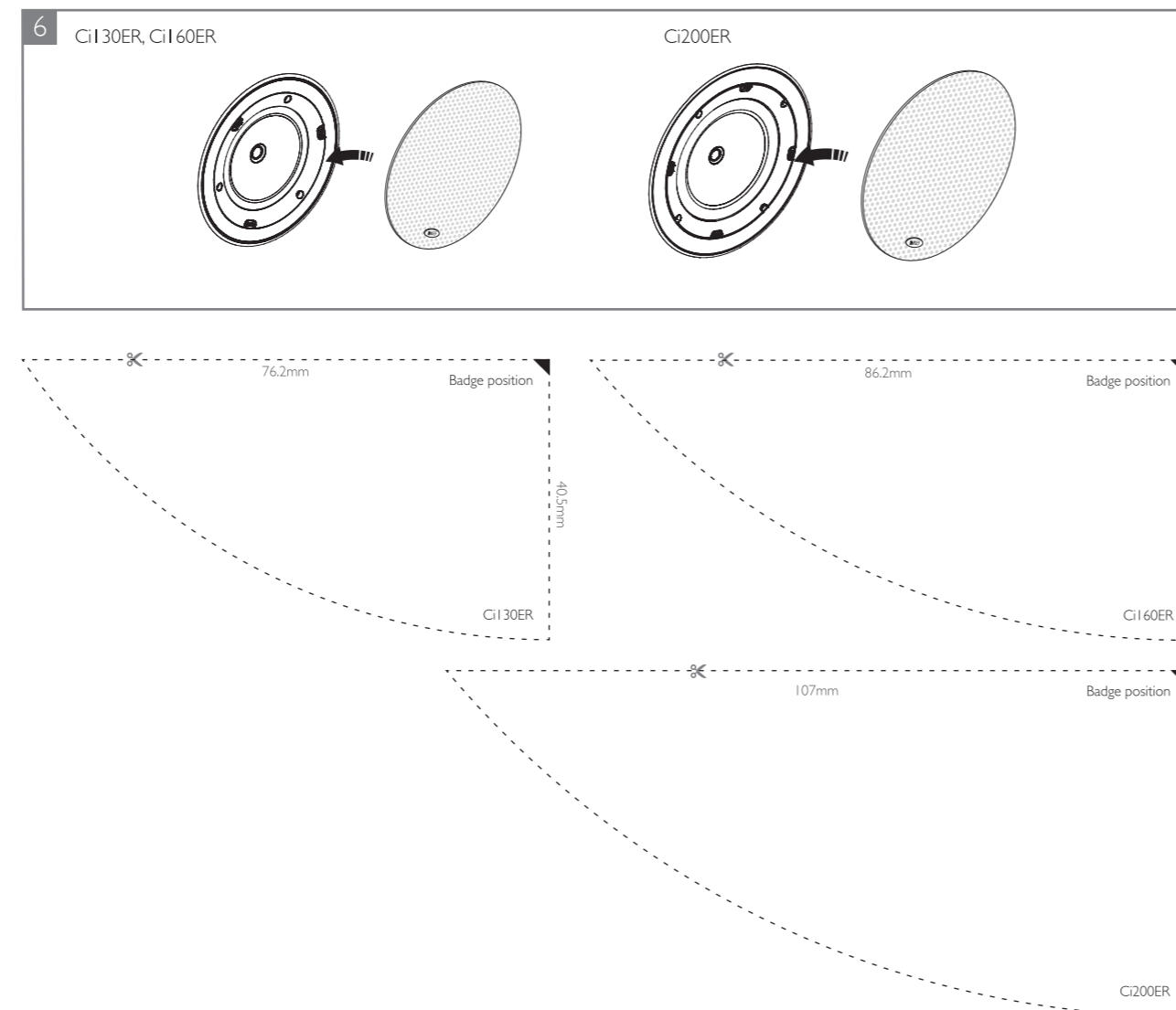
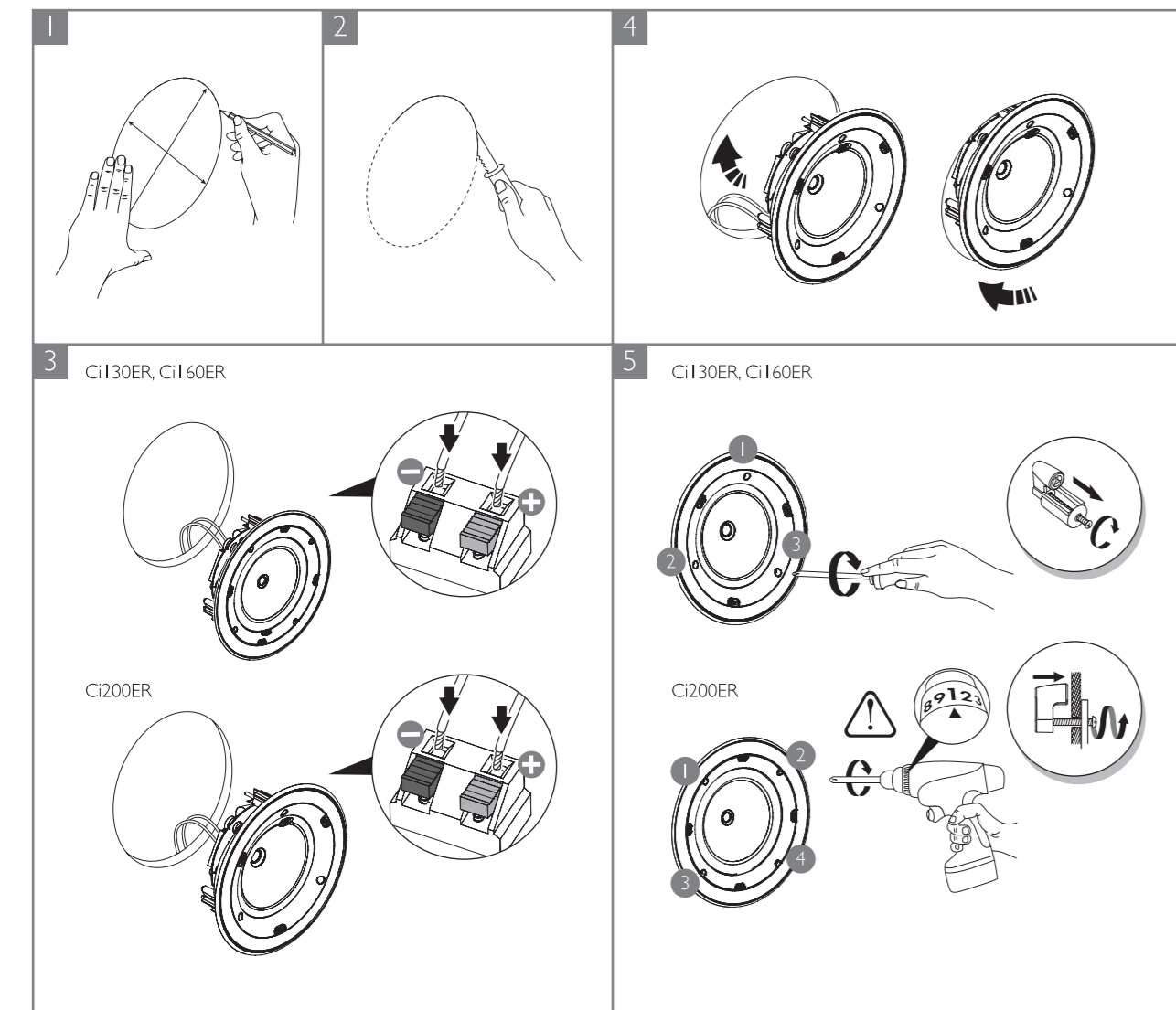




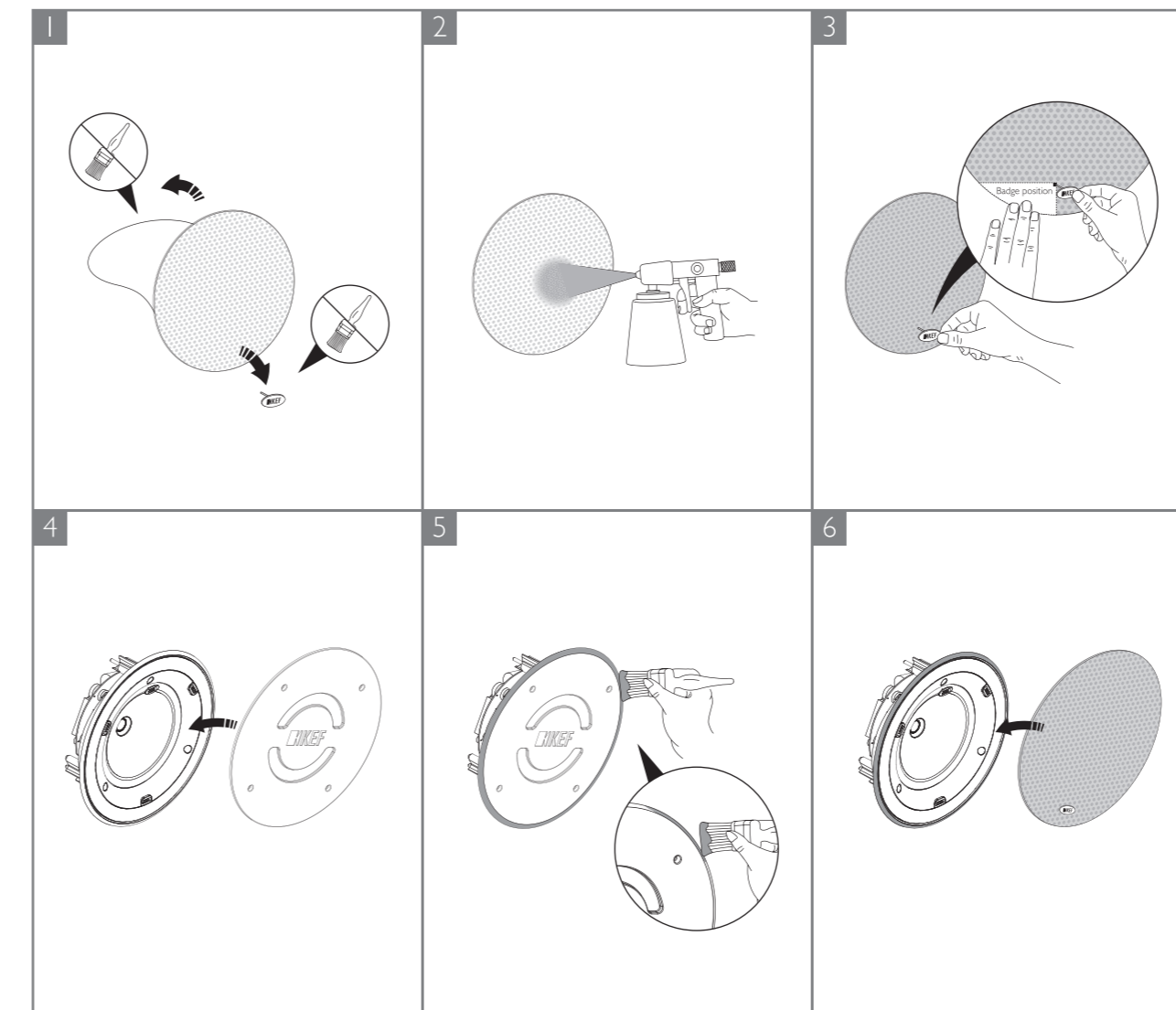
# Installation

F Installation D Installation I Installazione ES Instalación P Instalação NL Montag DK Instalation PL Instalacja  
 JP 取り付け CN 安装程序 TC 安装程式 K 설치



# Decoration

F Finition D Dekoration I Estetica ES Ornamentación P Acabamento NL Decoratie DK Dekoration PL Dekoracja  
 JP 裝飾 CN 装饰 TC 裝飾 K 외부 디자인



# Specifications

F Spécifications D Einleitung I Specifiche ES Especificaciones P Especificações NL Technische DK Dekoration PL Dane Techniczne  
 JP 仕様 CN 产品规格 TC 產品規格 K 사양

	Ci130ER	Ci160ER	Ci200ER
Model	E Series	E Series	E Series
Series	E Series	E Series	E Series
Nominal impedance	8Ω	8Ω	8Ω
Sensitivity (2.83V/1m)	87dB	89dB	90dB
Frequency response (±6dB) open-backed	52Hz - 20kHz	52Hz - 20kHz	45Hz - 20kHz
Crossover frequency	2.8kHz	2.8kHz	2.8kHz
Drive units	LF 130mm (5.25in.) HF 16mm (0.6in.) Uni-Q	160mm (6.5in.) 16mm (0.6in.) Uni-Q	200mm (8.0in.) 16mm (0.6in.) Uni-Q
Recommended amplifier power	10 - 80 W	10 - 100 W	10 - 125 W
Product external dimensions	Diameter Ø 193.4mm (7.61in.) Depth 81mm (3.19in.)	234.6mm (9.24in.) 88.7mm (3.49in.)	289.6mm (11.4in.) 103.3mm (4.07in.)
Cut-out dimensions	Diameter Ø 158mm (6.22in.)	196mm (7.71in.)	240mm (9.45in.)
Net weight	1.2kg (2.7lbs)	1.4kg (3.1lbs)	1.6kg (3.6lbs)
Mounting depth from surface	77.5mm (3.05in.)	85.2mm (3.35in.)	97.2mm (3.83in.)
Optional rough in frame	RIF130R	RIF160R	RIF200R
Optional rear enclosure	RNC130R	RNC160R	RNC200R

KEF reserves the right, in line with continuing research and development, to amend or change specifications. E&OE.